



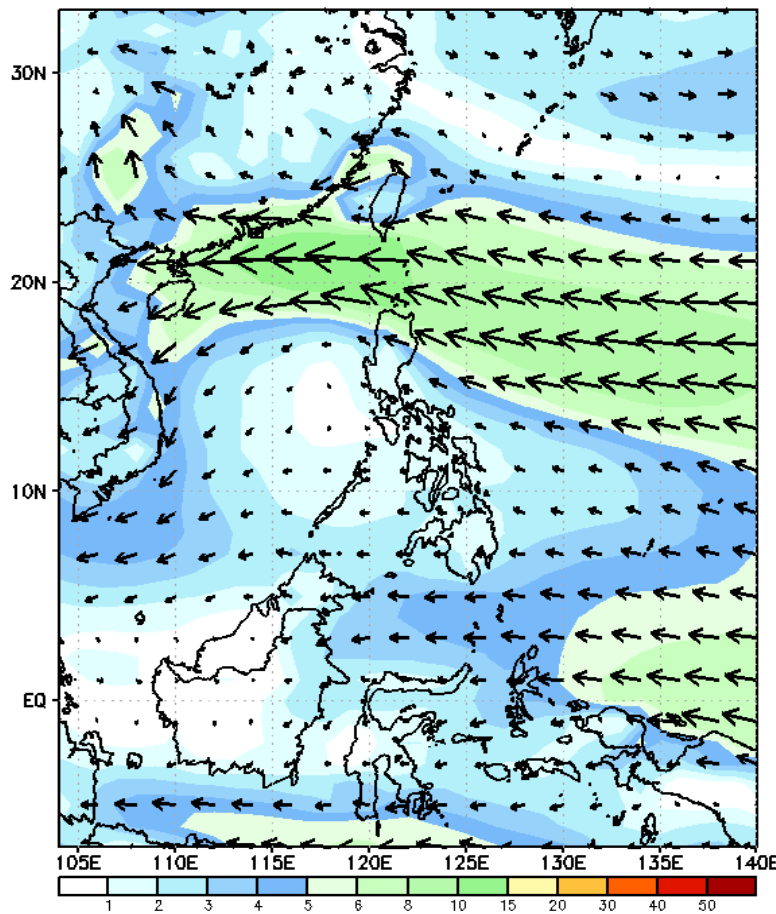
Week 1 & Week 2 Forecast for the Philippines using GEFS Model



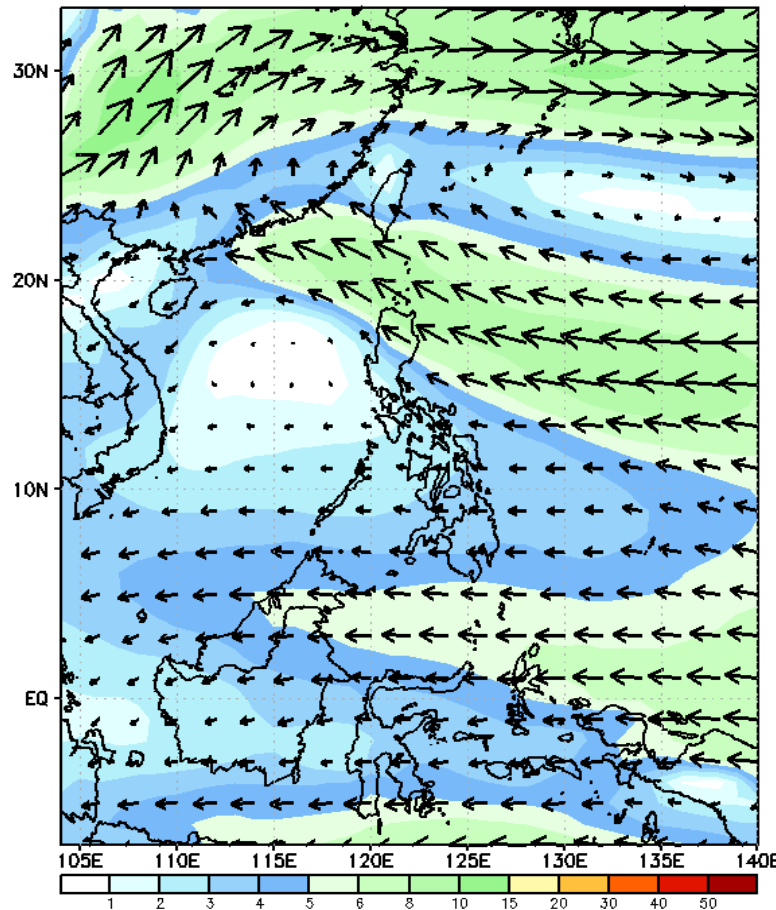
GEFS Week-1 Wind Forecasts:

Week 1: Nov 11-17, 2024

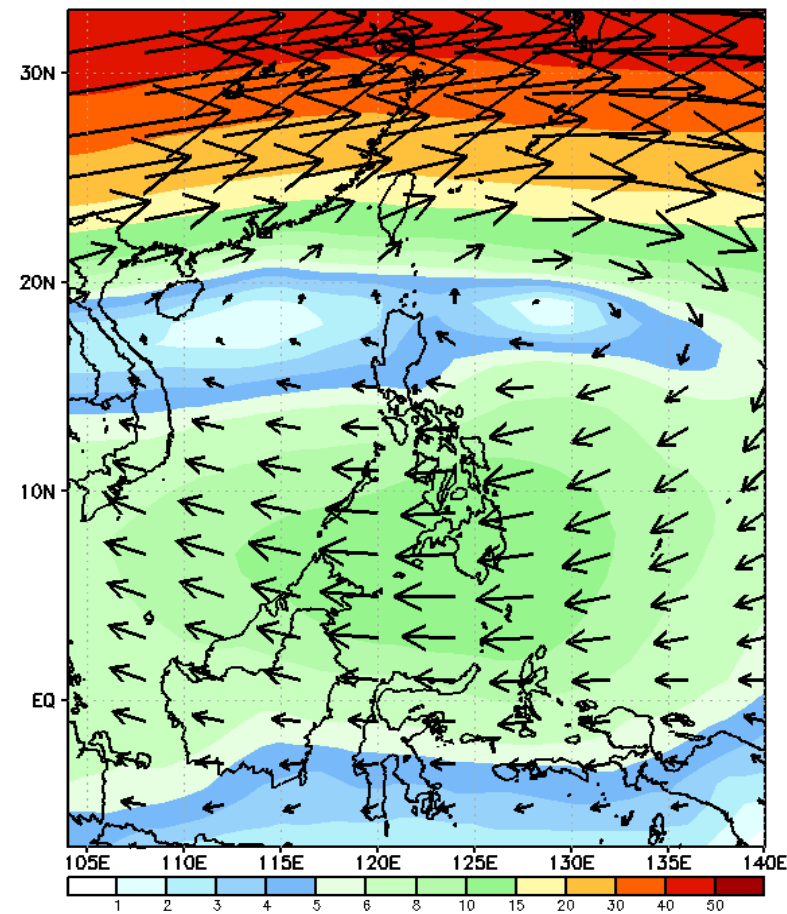
GEFS Week-1 850-hPa Wind Total
Valid: 20241111 - 20241117



GEFS Week-1 700-hPa Wind Total
Valid: 20241111 - 20241117

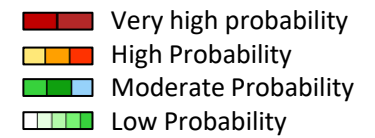


GEFS Week-1 200-hPa Wind Total
Valid: 20241111 - 20241117



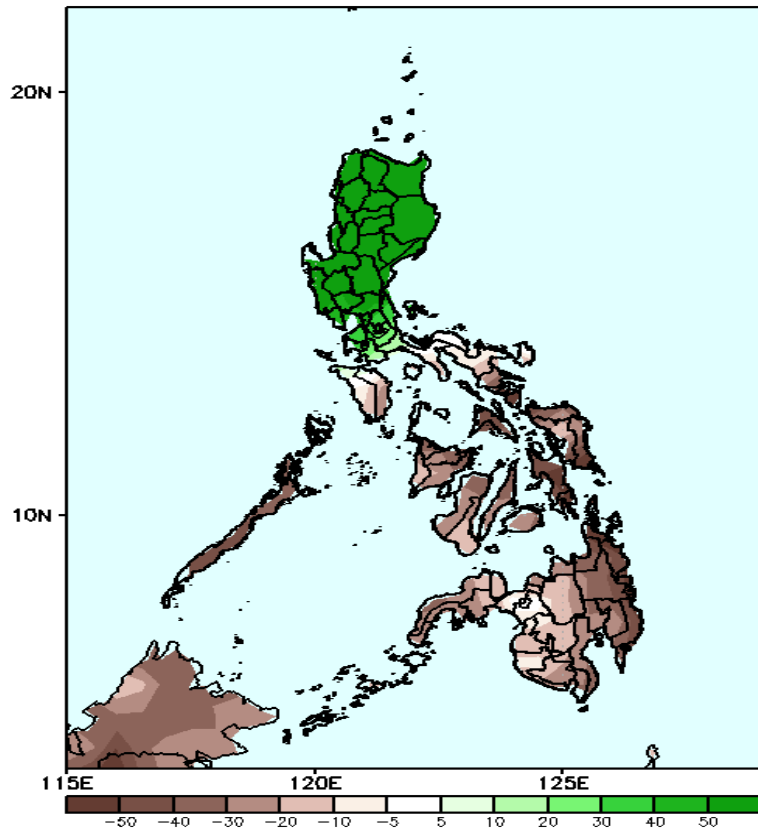
Easterlies will likely affect most parts of the country during the forecast period.

Precipitation Anomaly and Exceedance Probability > 25/50 mm



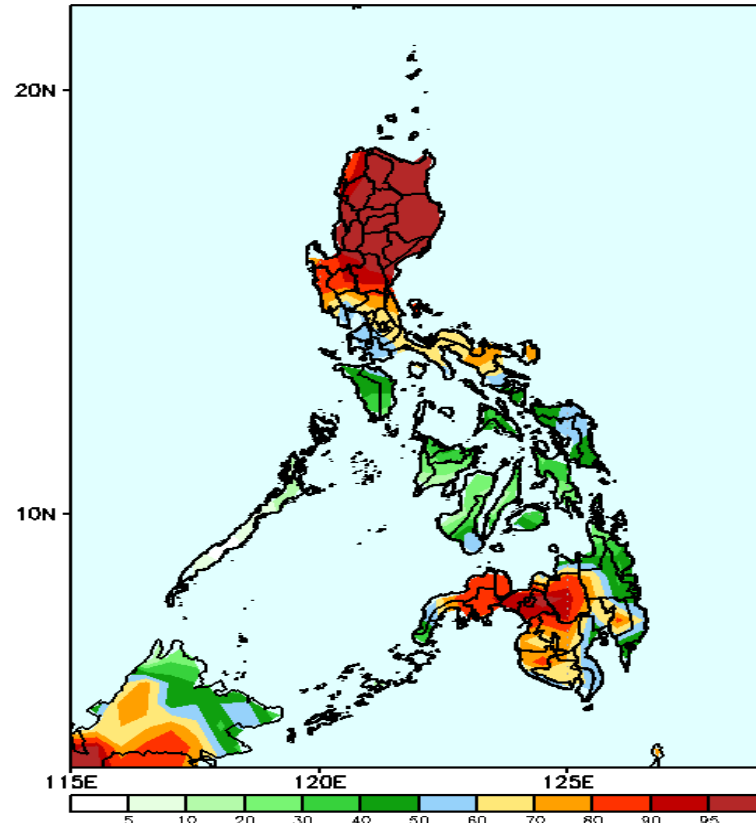
Week 1 Nov 11-17, 2024

GEFS Week-1 Precip Anomaly
Valid: 20241111 - 20241117



Increase of rainfall of more than 50mm will be likely in most parts of northern, central, and southern Luzon while rainfall deficit of 10-60mm is expected in Mindoro, Palawan, Quezon, Bicol Region, Visayas and Mindanao.

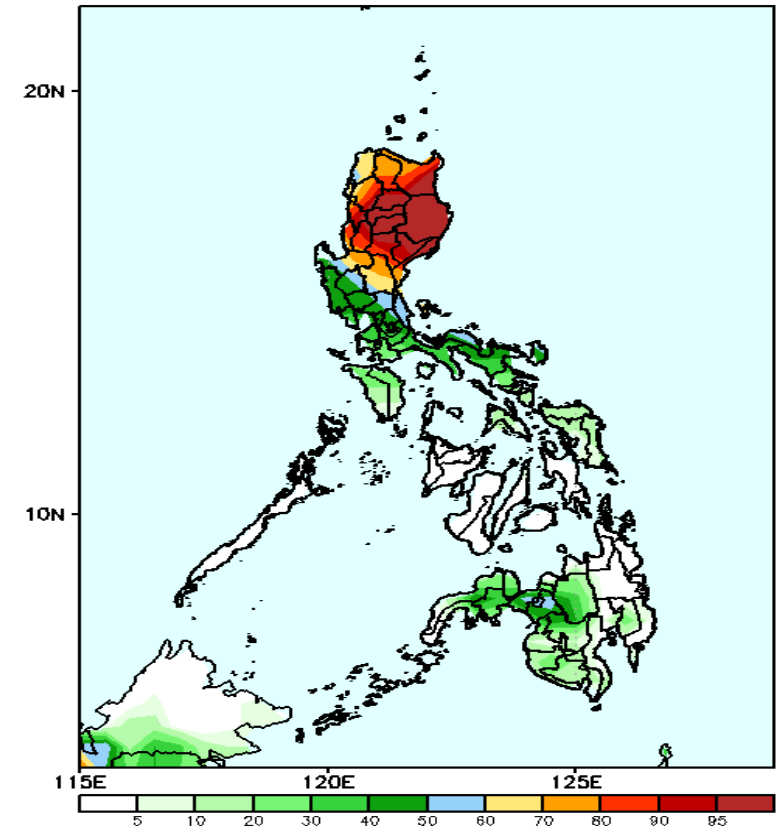
GEFS Week-1 Exceedance Prob. > 25mm
Valid: 20241111 - 20241117



Probability to Exceed 25mm

- High to a very high over most parts of northern and central Luzon and western Mindanao
- Moderate to high over most parts of southern Luzon, NCR, and Compostela Valley;
- Low to moderate over the rest of the country.

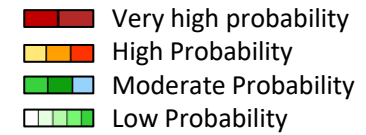
GEFS Week-1 Exceedance Prob. > 50mm
Valid: 20241111 - 20241117



Probability to Exceed 50mm

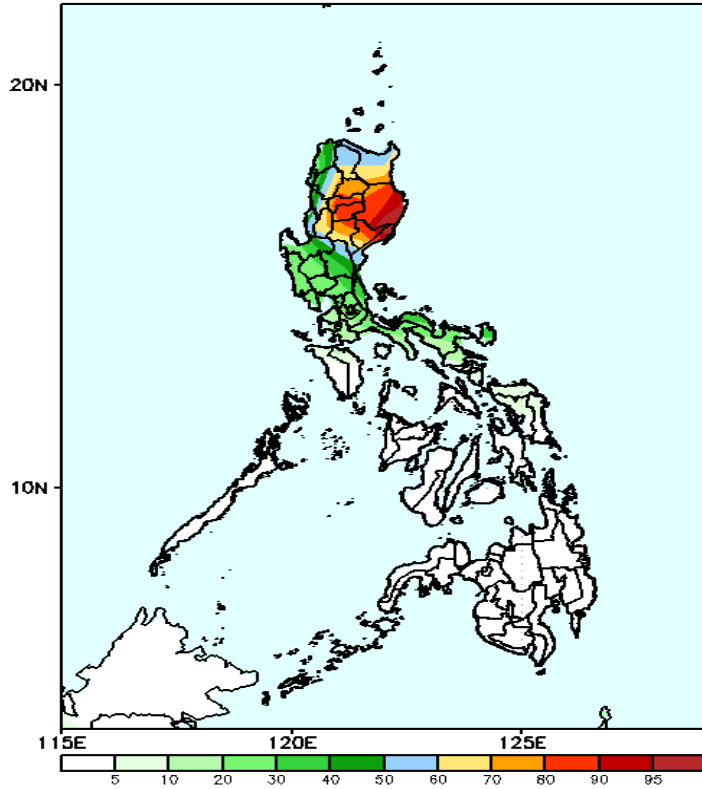
- High to a very high over Cagayan Valley CAR, Ilocos Provinces, and La Union;
- Moderate to high over Pangasinan, Central Luzon, Northern part of Quezon including Polillo Islands, and NCR;
- Low to moderate over the rest of the country.

Exceedance Probability > 100/150/200 mm



Week 1: Nov 11-17, 2024

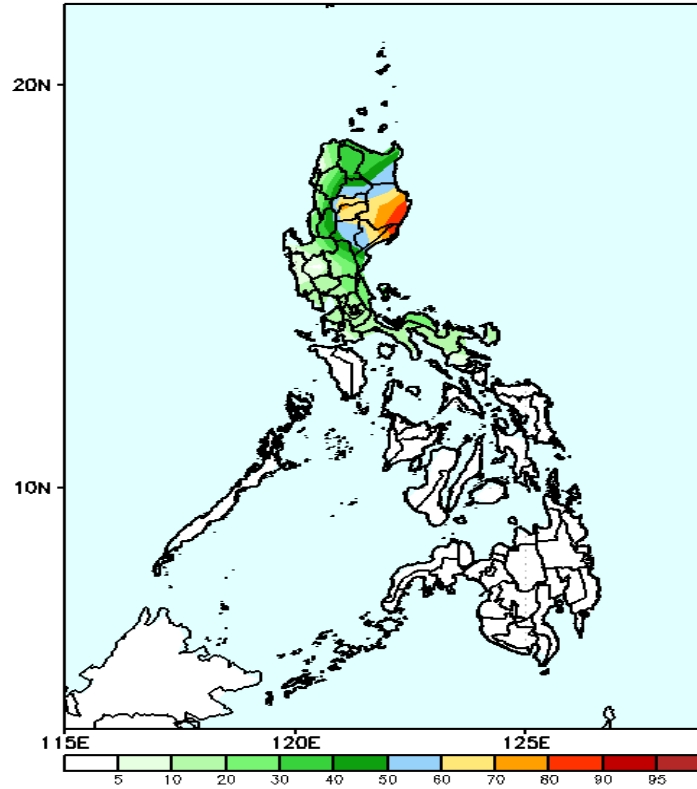
GEFS Week-1 Exceedance Prob. > 100mm
Valid: 20241111 - 20241117



Probability to Exceed 100mm

- High over Aurora, Cagayan Valley, CAR, Ilocos Provinces and La Union;
- Low to moderate over the rest of Luzon, except MIMAROPA;
- Low over the rest of the country;

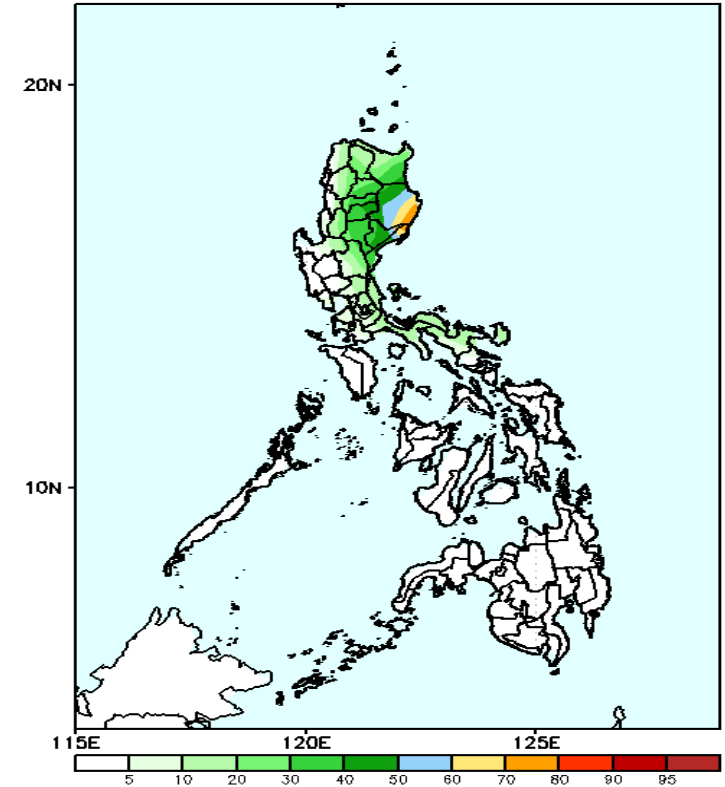
GEFS Week-1 Exceedance Prob. > 150mm
Valid: 20241111 - 20241117



Probability to Exceed 150mm

- Moderate to high over Aurora, portions of CAR and Cagayan;
- Low to moderate over the rest of Northern and Central Luzon;
- Low over the rest of the country.

GEFS Week-1 Exceedance Prob. > 200mm
Valid: 20241111 - 20241117



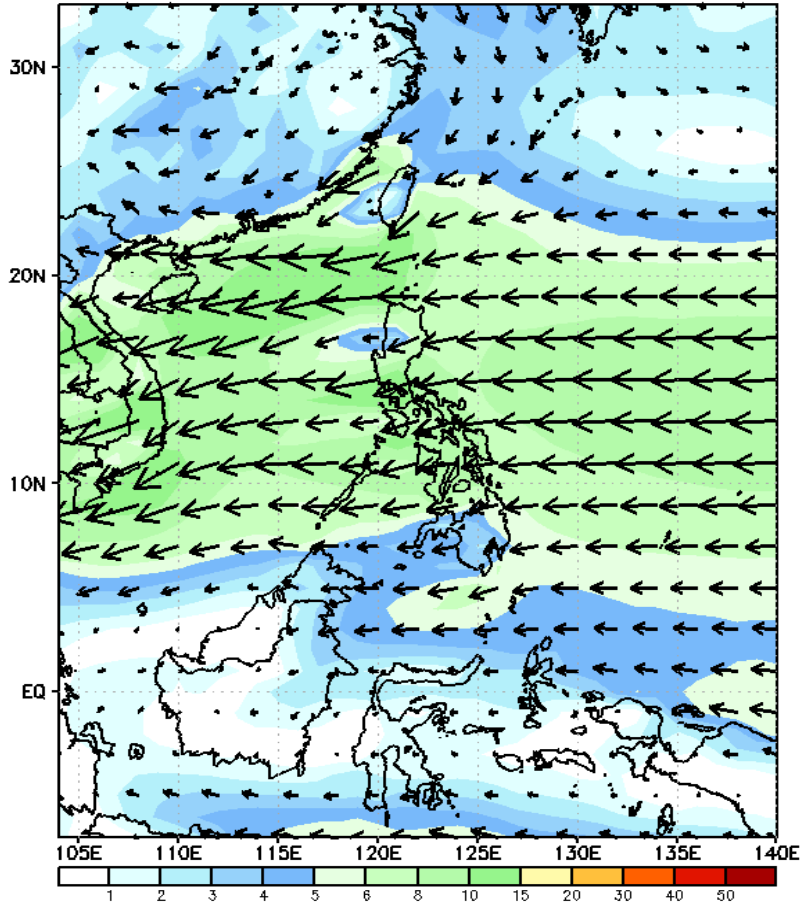
Probability to Exceed 200mm

- Moderate to high over portions of Aurora, Cagayan, and Isabela;
- Low to moderate over the rest of Luzon;
- Low over the rest of the country.

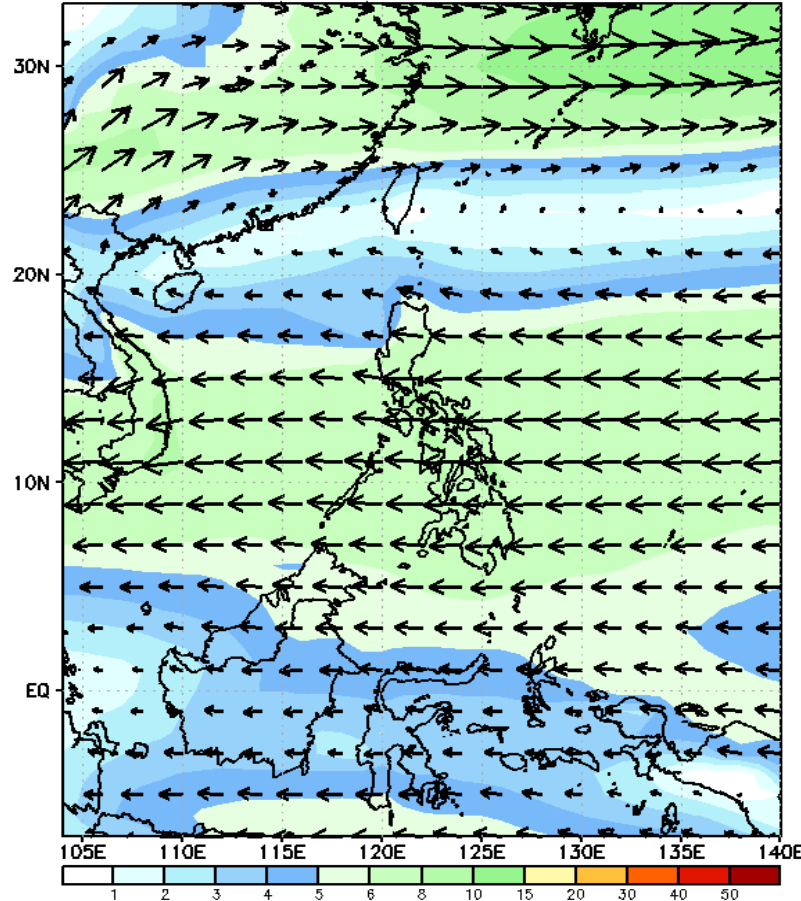
GEFS Week-2 Wind Forecasts:

Week 2: Nov 18-24, 2024

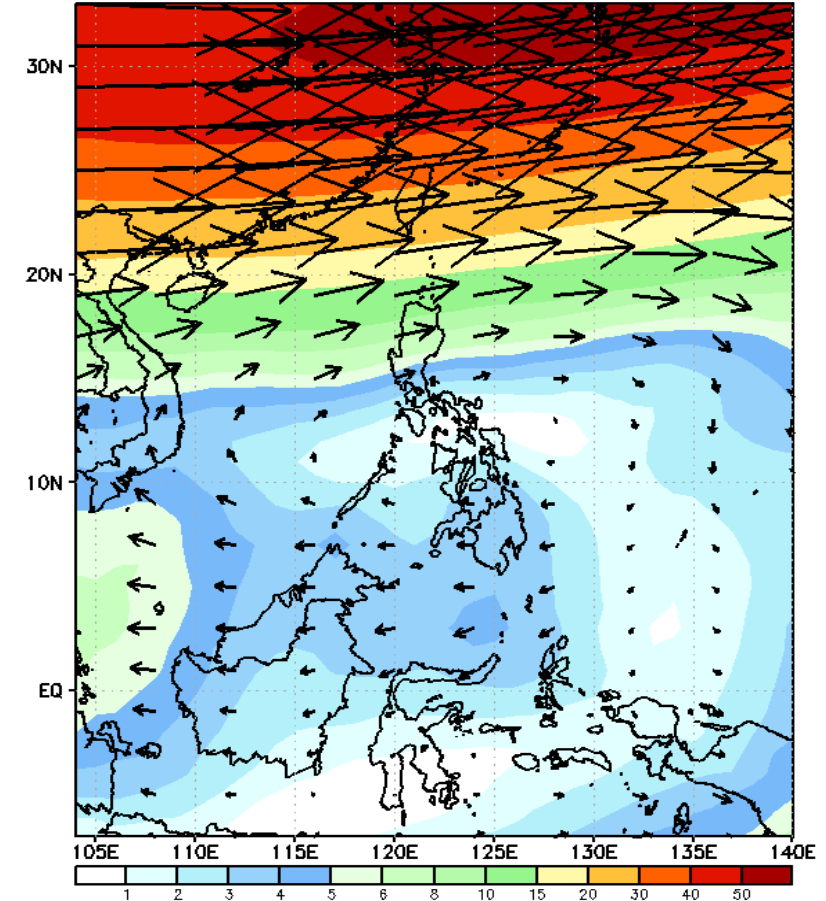
GEFS Week-2 850-hPa Wind Total
Valid: 20241118 - 20241124



GEFS Week-2 700-hPa Wind Total
Valid: 20241118 - 20241124



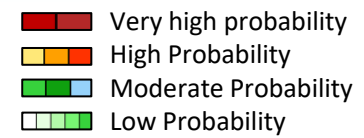
GEFS Week-2 200-hPa Wind Total
Valid: 20241118 - 20241124



Easterlies will likely affect most parts of the country during the forecast period.

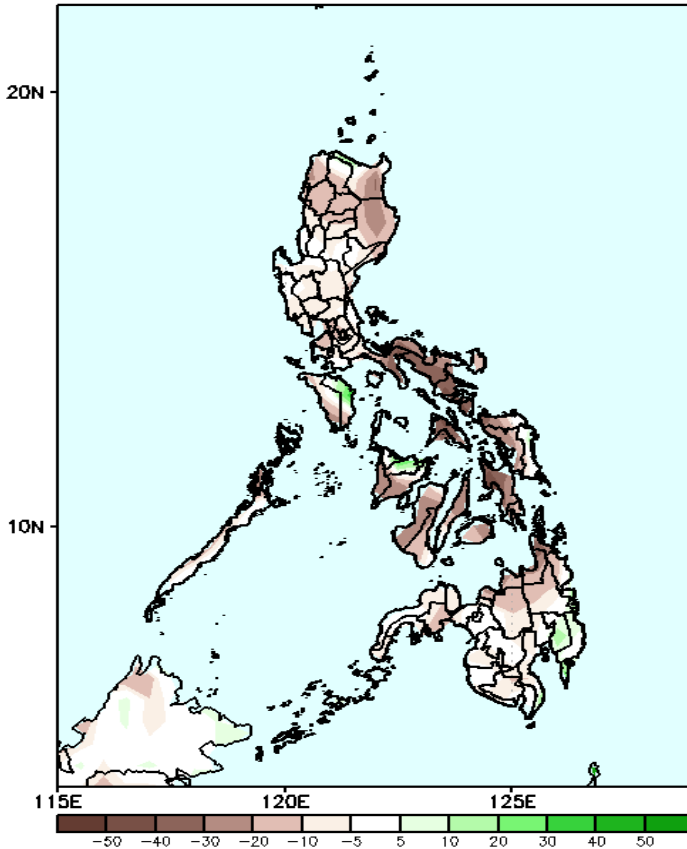


Precipitation Anomaly and Exceedance Probability > 25/50 mm



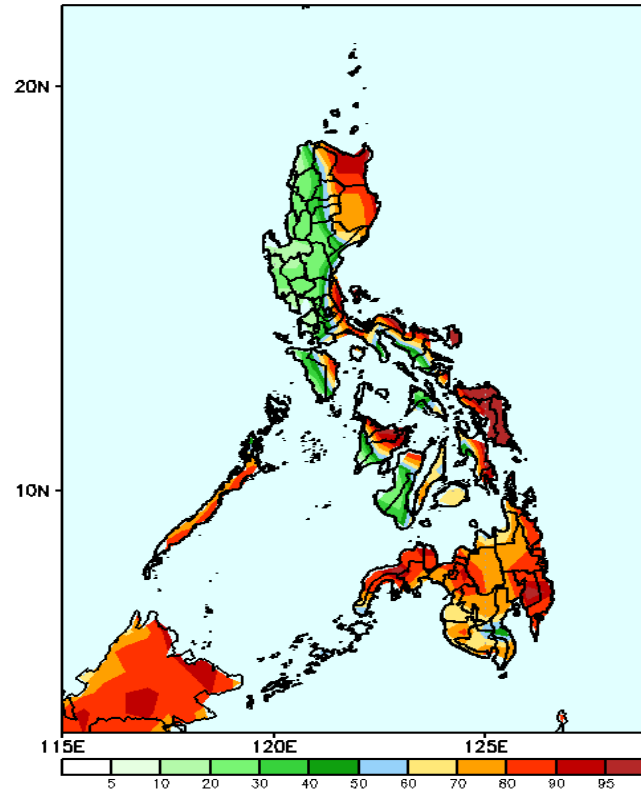
Week 2: Nov 18-24, 2024

GEFS Week-2 Precip Anomaly
Valid: 20241118 - 20241124



Rainfall deficit of 20-60mm is most likely in most parts of the country except in some areas in Or. Mindoro, and Capiz where there is 10-25mm increase of rainfall.

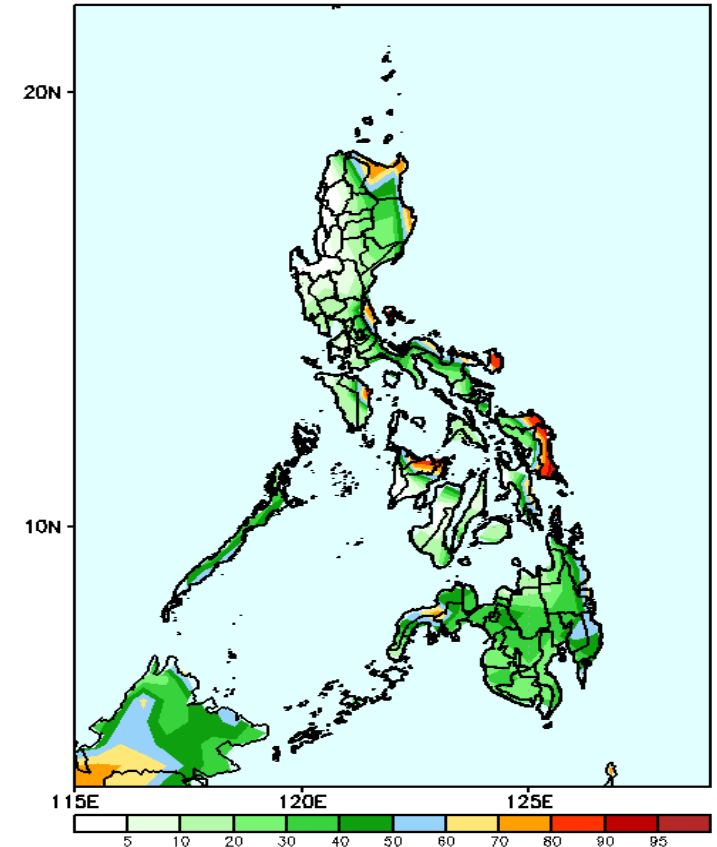
GEFS Week-2 Exceedance Prob. > 25mm
Valid: 20241118 - 20241124



Probability to Exceed 25mm

- High to very high Cagayan, Isabela, eastern parts of Apayao, Kalinga, Quezon, Catanduanes, Palawan, Samar provinces, eastern Panay Island, and most parts of Mindanao;
- Moderate to high over the rest of rest of the country.

GEFS Week-2 Exceedance Prob. > 50mm
Valid: 20241118 - 20241124



Probability to Exceed 50mm

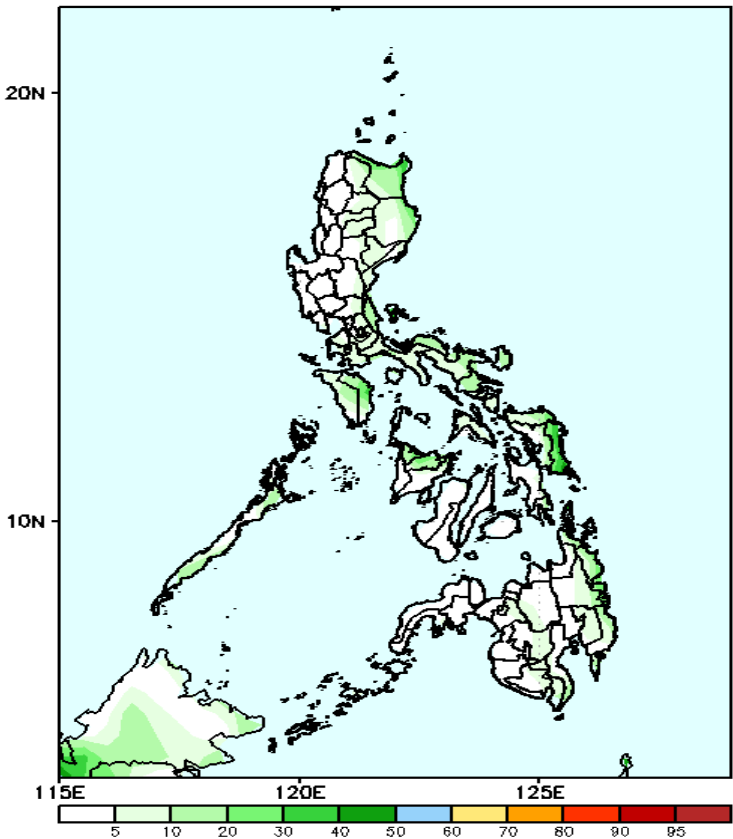
- Moderate to high over the eastern portions of Cagayan, Isabela, Quezon, Bicol Region, Eastern Visayas, Capiz, and the western and eastern portions of Mindanao;
- Low to moderate over the rest of the country.

Exceedance Probability > 100/150/200 mm

- Very high probability
- High Probability
- Moderate Probability
- Low Probability

Week 2: Nov 18-24, 2024

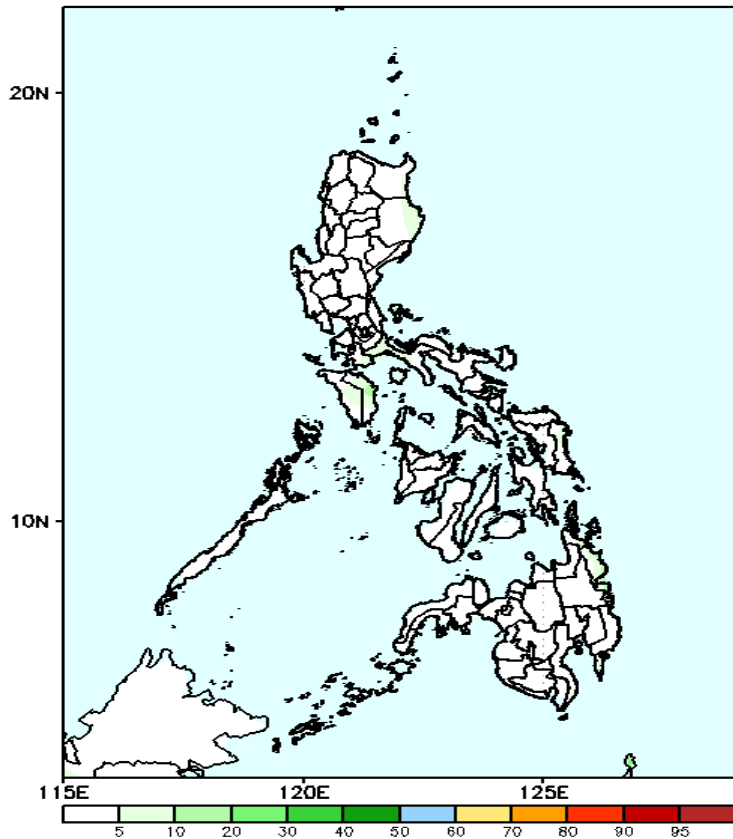
GEFS Week-2 Exceedance Prob. > 100mm
Valid: 20241118 - 20241124



Probability to Exceed 100mm

- Low across the country.

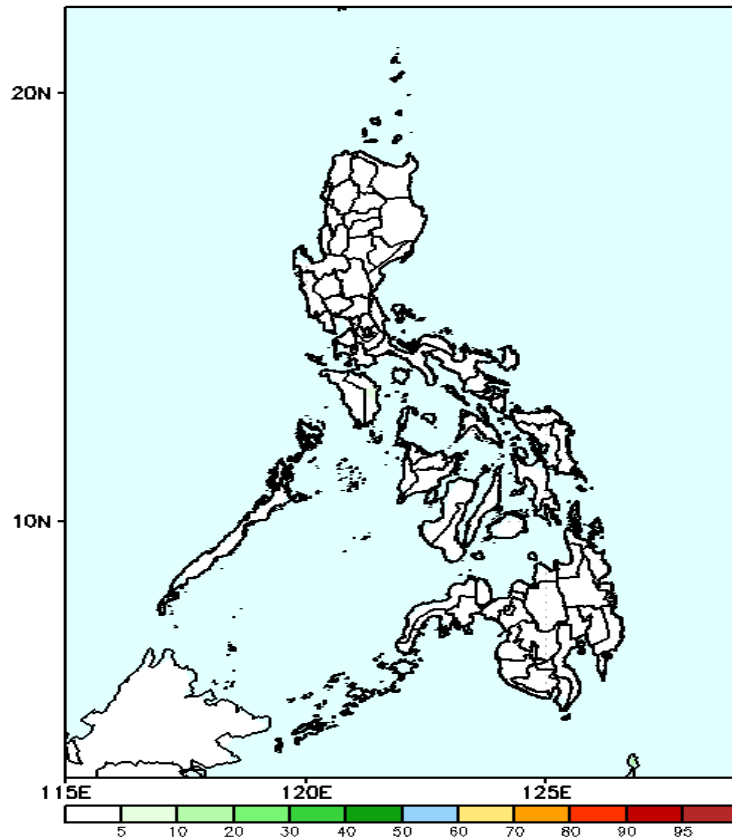
GEFS Week-2 Exceedance Prob. > 150mm
Valid: 20241118 - 20241124



Probability to Exceed 150mm

- Low across the country.

GEFS Week-2 Exceedance Prob. > 200mm
Valid: 20241118 - 20241124

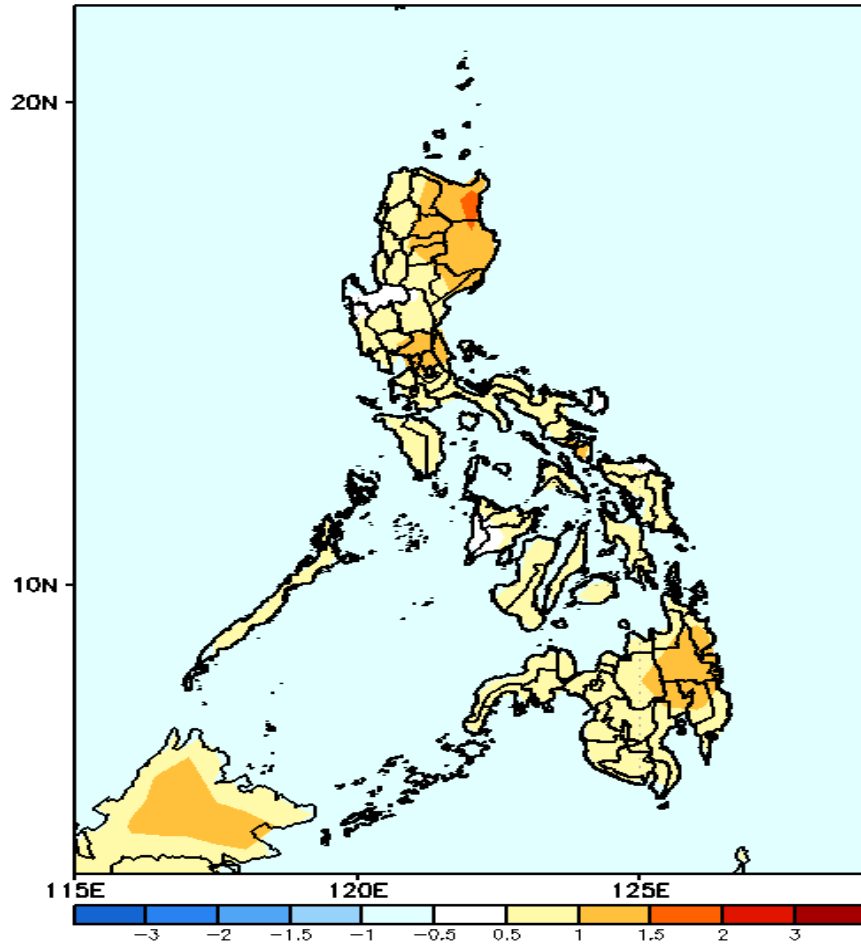


Probability to Exceed 200mm

- Low across the country.

GEFS Week-1 & 2 Forecasts: T2m Anomaly

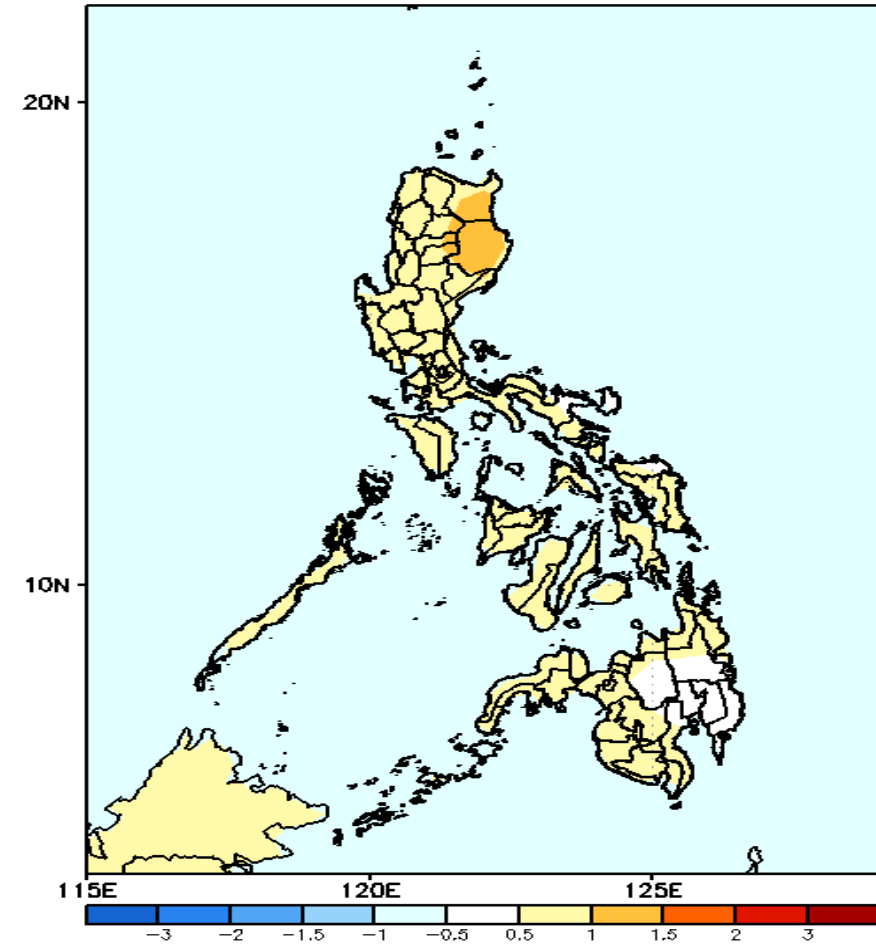
GEFS Week-1 T2m Anomaly
Valid: 20241111 - 20241117



2m Temperature Week 1: Nov 11-17, 2024

Slightly warmer to warmer than average surface air temperature will likely be experienced in most parts of the country.

GEFS Week-2 T2m Anomaly
Valid: 20241118 - 20241124



2m Temperature Week 2: Nov 18-24, 2024

Near to slightly warmer than average surface air temperature will likely be experienced in most parts of the country.